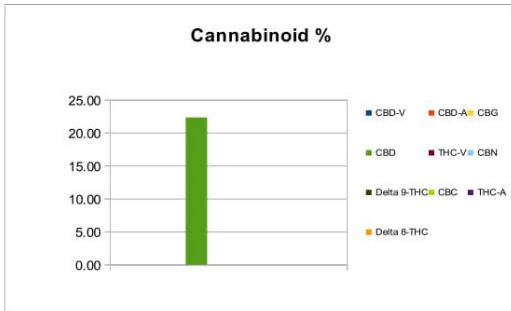



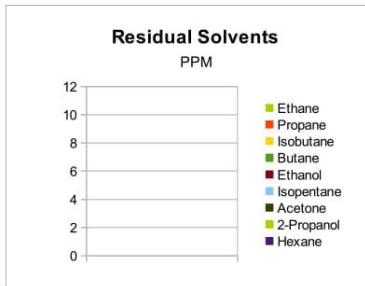
Sample Information		
Sample Identification	350mg / 15ml	
Laboratory Number	2018001661 DUP	
Batch Number	NA	
Matrix	Tincture	
Analyzed Date	02/06/18	
Extraction Date	02/06/18	
Cannabinoid (HPLC)	mg/mL	mg /Bottle
Compound		
CBD-V	0.00	0.00
CBD-A	0.00	0.00
CBG	0.00	0.00
CBD	22.35	335.27
THC-V	0.00	0.00
CBN	0.00	0.00
Delta 9-THC	0.00	0.00
CBC	0.00	0.00
THC-A	0.00	0.00
Delta 8-THC	0.00	0.00
Cannabinoids Total		
Max Active THC	0.00	0.00
Max Active CBD	22.35	335.27
T. Active Cannabinoids	22.35	335.27
Total Cannabinoids	22.35	335.27
Max Active Ratios		
NA :1 CBD to THC		
0.0 :1 THC to CBD		



Sample Image		
		
Micro Visual: Not Tested		
Compound	CFU/g	
Aerobic	NT	
Microbial Plate:		
Coliforms	NT	
E/Coli	NT	
Enterobacteriaceae	NT	
Yeast & Mold	NT	
Percent Moisture		
NT		



RS (GCMS-HS)	PPM	RL
Compound		
Ethane	NT	20.0
Propane	NT	5.0
Isobutane	NT	5.0
Butane	NT	5.0
Ethanol	NT	5.0
Isopentane	NT	5.0
Acetone	NT	50.0
2-Propanol	NT	5.0
Hexane	NT	5.0
Heptane	NT	5.0



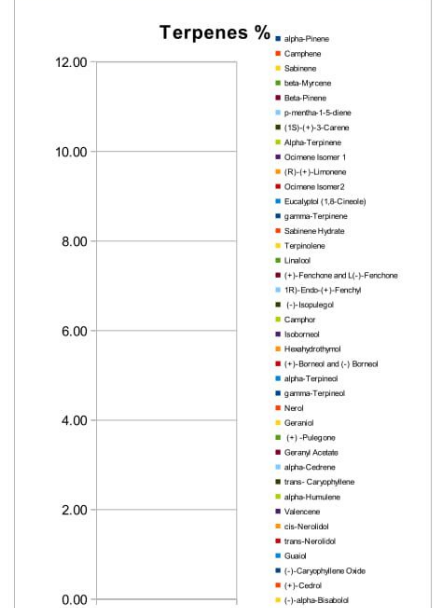
mL/bottle	15
mg THC/bottle	0
mg CBD/bottle	335.27
(mg) total cannabinoids/bottle	335.27

Metals	PPM	RL
Compound		
Mercury	NT	0.001
Lead	NT	0.010
Arsenic	NT	0.010
Cadmium	NT	0.010

RL=Reporting Limit
NA=Not Applicable
NT=Not Tested



Terpene (GC-MS)	mg/mL	mg/Bottle
Compound		
alpha-Pinene	NT	NT
Camphene	NT	NT
Sabinene	NT	NT
beta-Myrcene	NT	NT
Beta-Pinene	NT	NT
p-mentha-1-5-diene	NT	NT
(1S)-(+)-3-Carene	NT	NT
Alpha-Terpinene	NT	NT
Ocimene Isomer 1	NT	NT
(R)-(+)-Limonene	NT	NT
Ocimene Isomer2	NT	NT
Eucalyptol (1,8-Cineole)	NT	NT
gamma-Terpinene	NT	NT
Sabinene Hydrate	NT	NT
Terpinolene	NT	NT
Linalool	NT	NT
(+)-Fenchone and L(-)-Fenchone	NT	NT
1R)-Endo-(+)-Fenchyl	NT	NT
(-)-Isopulegol	NT	NT
Camphor	NT	NT
Isoborneol	NT	NT
Hexahydrothymol	NT	NT
(+)-Borneol and (-) Borneol	NT	NT
alpha-Terpineol	NT	NT
gamma-Terpineol	NT	NT
Nerol	NT	NT
Geraniol	NT	NT
(+) -Pulegone	NT	NT
Geranyl Acetate	NT	NT
alpha-Cedrene	NT	NT
trans- Caryophyllene	NT	NT
alpha-Humulene	NT	NT
Valencene	NT	NT
cis-Nerolidol	NT	NT
trans-Nerolidol	NT	NT
Guaiol	NT	NT
(-)-Caryophyllene Oxide	NT	NT
(+)-Cedrol	NT	NT
(-)-alpha-Bisabolol	NT	NT
Total Terpenes	NT	NT



Chemist: TS